



## UNESCO Korea and Seoul - 11 Days (#20152)

**Note:** Price printed on this PDF is valid until **29-12-2024** and is subject to change without notice due to Partner changes and currency fluctuations

### Overview

UNESCO world heritage of Korea refers to both cultural and natural heritage sites registered on its world heritage list. Since the earliest settlements on the Korean Peninsula and in South Eastern Manchuria during prehistoric times, the people of Korea have developed a distinctive culture based on their unique artistic sensibility. The geographical conditions of the peninsula provided Koreans with opportunities to receive both continental and maritime cultures and ample resources, which in turn enabled them to form unique cultures of interest and value for humanity, both then and now. Korea's vibrant cultural legacy, comprising art, literature, dance, architecture, clothing and cuisine, offers a delightful combination of tradition and modernity, and is now appreciated in many parts of the world. The volcanic island of Jeju-do has been chosen as UNESCO natural heritage for its outstandingly beautiful and natural environment that is significant for its geological features and ecological value.

This tour takes you to visit almost World Heritage in Korea designated by UNESCO in culture, nature and intangible culture.

Departure on selected Sundays.



## Trip Highlights

Seoul-Jeju-Busan-Gyeongju-Daegu-Andong-Pyeongchang-Mt. Seorak-Seoul

## Detailed Itinerary

### Day 01

#### Day 01: (Sunday) - Incheon-Seoul

Upon arrival at Incheon International Airport which has been awarded to World's Best in Airport Service Quality by Airport Council International, met by our representative and transfer to Seoul which is the centre of politics, economy and culture in Korea. The rest of day is free at your leisure.

**Hotel:** Swiss Grand Hotel Seoul or similar

**Meal:** No Meal

### Day 02

#### Day 02: (Monday) - Seoul

After breakfast, pick up at your hotel around 08:30-09:00 am. Seoul full day sightseeing – Jogyesa temple. Gyeongbokgung Palace (Deoksu Palace on Tue). The Royal Guard Changing Ceremony. National Folk Museum. Korean Ginseng Centre or Amethyst shop and transfer to Korean Folk village. Korean Folk Village (an hour and half drive away from Seoul) - you will experience the culture of the late Joseon Dynasty, it's huge village that has about 260 different types of houses of each province. Return to Seoul and take a rest.

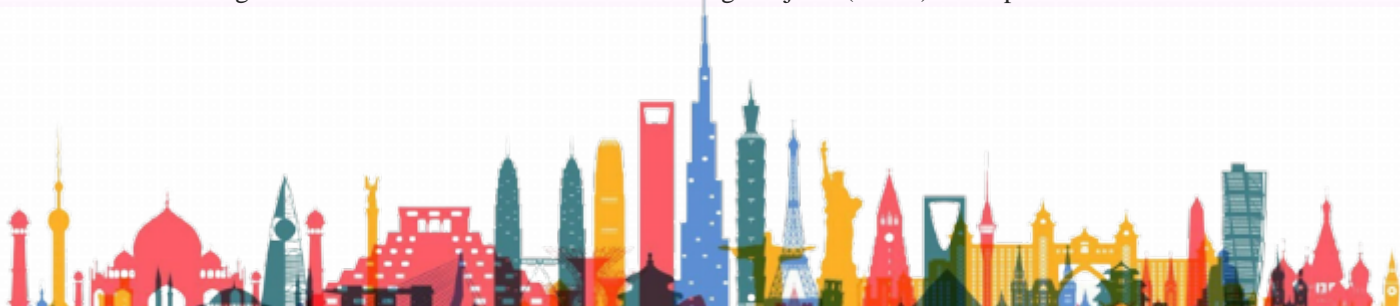
**Hotel:** Swiss Grand Hotel Seoul or similar

**Meal:** Breakfast

### Day 03

#### Day 03: (Tuesday) - Seoul-Jeju

After breakfast, pick up at your hotel. Depending on your domestic flight schedule, meet the driver 3 hours before departure and transfer to Gimpo Airport. Fly to Jeju by domestic air. When you arrive at Jeju airport you can meet the driver. you will be transferred to hotel and free time on your own. (hotel check in available after 15:00). \*Jeju-do's volcanic island and lava tubes have been registered as UNESCO's world natural heritage. Jeju-do(island) is the premier tourist destination in Korea



because of its stunning natural scenery and superior tourist amenities. Scenic beaches, waterfalls, cliffs and caves lie in harmony and the mild weather makes Jeju-do an even more ideal tourist site.

**Hotel:** Grand Hyatt Jeju

**Meal:** Breakfast

**Day 04**

**Day 04: (Wednesday) - Jeju**

Breakfast at your hotel, and then enjoy a full day of sightseeing. Visit Hyupjae Beach, Hallim Park where you can enjoy Palm Tree Road, Jeju Stone and Bonsai Garden, Water Garden, Subtropical Botanic Garden and much more. and O'sulloc Tea Museum which was opened by Amore Pacific in 2001 with the aim of introducing and spreading Korean teas and the traditional tea culture of Korea. After lunch, take Sanbang Mountain Cruise and Cheonjeyeon falls, named "The Pond of God," consists of three sections. Transfer to your hotel.

**Hotel:** Grand Hyatt Jeju

**Meal:** Breakfast

**Day 05**

**Day 05: (Thursday) - Jeju-Busan**

Enjoy a delicious breakfast at your hotel Enjoy a delicious breakfast at your hotel transfer to the Jeolmul Natural Forest which is located under the crater of baby volcano and is mainly composed of cedar trees born in 30 to 45 years in an area of 300ha. Then transfer to the Seong up Folk Village where shows the unique culture of Jeju Island. Visit Haenyeo Museum where exhibits various photos of haenyeo female divers and their activities, to provide an accurate picture of their lives or enjoy woman diver show (UNESCO Intangible Cultural asset) Seongsan Ilchulbong Peak, rose 180 meters above sea level due to a magma flow under the sea over 5,000 years ago and it was originally a separate island, but a build-up of sand and soil has connected it to the main island. Manjanggul which holds great value for science and conservation studies, having well-maintained formations despite being formed over one hundred thousand years ago. Transfer to Jeju airport and fly to Busan by domestic air. Arrive at Busan airport, transfer to hotel

**Hotel:** Grand Josun Busan Hotel

**Meal:** Breakfast



**Day 06**

**Day 06: (Friday) - Busan-Gyeongju**

After breakfast at the hotel, meet a guide for a full day sightseeing in Busan. Visit Haeundae Beach, the most famous beach in Busan. The white sand beach is roughly 1.5 kilometres long, over a 30- to 50-meter-wide area, creating a beautiful coastline before a shallow bay. Proceed to Yonggungsa Temple via Dalmaji-gil Road, famous for its views of the blue ocean, white sandy beach, Camellia Forest, and pine tree forest, creating one of Busan's eight scenic sites. Haedong Yonggungsa Temple is situated on the coast of the north-eastern portion of Busan. Transfer to Gam Cheon Culture Village, formed by houses built in staircase-fashion on the foothills of a coastal mountain, earning this village the nickname "Machu Picchu of Busan. Continue to visit Korea's largest seafood market, Jagalchi Fishery market and BIFF Square. Experiencing traditional rice cake making with a master rice cake maker and tasting it. Transfer to Gyeongju (1.5hrs by car) and visit Gyeongju Donggung Palace and Wolji Pond, a secondary palace used by the crown prince of the Silla Kingdom. You can enjoy the reflection of Imhaejeon in Wolji during the night

**Hotel:** Lahan Select Gyeongju

**Meal:** Breakfast

**Day 07**

**Day 07: (Saturday) - Gyeongju-Daegu**

Breakfast at the hotel. Met by our guide at 08:30 am. Gyeongju, a museum without walls. In 57 BC, around when Julius Caesar was subduing Gaul, it became the capital of the Shilla Dynasty and remained so for about 1000 years. Gyeongju preserves a vast amount of significant and fascinating historical heritage. Along with Bulguksa Temple and Seokguram Grotto, its historical district has been designated as a World Heritage by UNESCO. Gyeongju National Museum, Cheomgseongdae Astronomical Observatory, Seokguram Grotto (UNESCO world heritage) - an artificial stone temple made of granites, located on the eastern peak of Mt. Toham. Inside the round-shaped main hall, there are the Bonjon Statue, Bodhisattva and his disciples. It was built to preserve these statues. Bulguksa Temple (UNESCO world heritage) – The beauty of the temple itself and artistic touch of the stone relics are as awesome and fascinating as to be highly praised by visitors from all over the world. Move to Daegu city for overnight which is a largest and central city of this province. Check in at hotel and take a rest.

**Hotel:** Hotel Inter-Burgo Daegu

**Meal:** Breakfast





**Day 08**

**Day 08: (Sunday) - Daegu Haeinsa- Temple Andong Pyeongchang**

After Check-out, move to Haeinsa Temple located in Gayasan National Park. Haeinsa Temple was founded by King Ae-Jang of Shilla Dynasty (802), well known for its famous treasure “TripitakaKoreana”(UNESCO world heritage) composed of 81,341 printing woodblocks made to repulse the Mongolian Army Invasion with support of Buddha. And then transfer to Andong Hohoe Village which has preserved the housing architecture and the village structure of the Joseon Dynasty. Moreover, the Village was not artificially created; there are people who live there. The Hohoe Village has become world-famous for the visit of The Queen Elizabeth II of Britain several years ago. And then transfer to Pyeongchang one of 2018 PyeongChang Olympic Cities.

**Hotel:** Intercontinental Alpensia Pyeongchang Resort

**Meal:** Breakfast

**Day 09**

**Day 09: (Monday) - Pyeongchang Mt.Seorak Seoul**

Breakfast at the hotel. Move to Woljeongsa. Learning temple etiquette, Temple tour, Walking Meditation or conversation with a monk and monastic meal (The Woljeongsa temple stay experience is available for a minimum of 8 people. The experience is not available for groups of less than 8 people). Move to Seoraksan National Park of which the peaks break through the clouds while jade-like water flows through the valleys, creating breathtaking views and making this Korea’s most famous national park. UNESCO designated this park a Biosphere Preservation District in 1982 due to so many rare species found here. Visit Sinheungsa-temple located in Mt.Seorak which is an ancient temple with deep historical significance, built by a great monk Jajangyulsa (590~658). (Optional Tour: Gwongeumseong Cable Car–AUD 46 PP). Gwongeumseong is a site of castle ruins located on the steep Dol Mountain of Seoraksan National Park area. After sightseeing of Seoraksan National Park, move to Seoul. Drop off the hotel.

\*\*During the peak season in October, the Seoraksan National Park will restrict buses and medium size bus for entries. Therefore, the bus must park at C District Square, and you must walk 3.6km to the entrance from C District Square. So please be aware of that we might not be able to visit Seoraksan National Park for this tour.

**Hotel:** Swiss Grand Hotel Seoul or similar

**Meal:** Breakfast



**Day 10**

**Day 10: (Tuesday) - Seoul**

After breakfast, pick up at your hotel at 08:00 am

DMZ Half Day tour (closed on Mon and National Holiday), Passport is required to join. Hotel. Imjingak Park. The Unification Bridge. ID Check. DMZ theatre and exhibition hall. The 3rd Infiltration Tunnel. Dora Observatory. Doras and Station. Amethyst or Ginseng Centre. Drop off at Seoul City Hall (please back to your hotel on your own by a taxi or subway or on foot after enjoying the city street). After the Korean War, Korea and North Korea established a border that cut the Korean peninsula roughly in half. Stretching for 2km on either side of this border is the Demilitarized Zone. The 3rd Infiltration Tunnel, the 3rd tunnel was discovered on October 17, 1978. It is located 52km from Seoul. Approximately 10,000 soldiers can move through this tunnel in 1 hour"

**Hotel:** Swiss Grand Hotel Seoul or similar

**Meal:** Breakfast

**Day 11**

**Day 11: (Wednesday) - Seoul-Incheon**

After breakfast at your hotel, you will be pick up at your hotel lobby 4hours before your flight departure.

**Meal:** Breakfast

## Inclusions

Transfer from/to airport on Private, Hotel accommodation with twin sharing with breakfast, Guide (Bi-lingual tour guide), Transportation (as itinerary), Entrance fees, Depends on your group size the vehicle type will be decided in 10 days before the program starts.

## Exclusions

Gratuity for the guide and driver, Travel Insurance, Optional tour fees , Lunch & Dinner, Single room charge, International & Domestic Air.



## Note

- \* Above programs are based on joint Sit-in-Coach guided by bilingual speaking guide (English-Korean)
  - \* Above programs may be accompanied by other language guide.
  - \* Above programs are operated on fixed day as above with min.2pax but please contact us for confirmed date
  - \* Kindly note that we have no responsibility for your personal incidents and losses during all the tours.
  - \* Size of vehicle is subject to number of Pax on the travelling date.
  - \* It is kindly noticed that the portion to be unused due to your personal reason is not refundable.
  - \* Above schedule and hotel are subject to change due to local circumstance as like weather, traffic and big events.
- \*\*During the peak season in October, the Seoraksan National Park will restrict buses and medium size bus for entries. Therefore, the bus must park at C District Square and you must walk 3.6km to the entrance from C District Square. So please be aware of that we might not be able to visit Seoraksan National Park for this tour.

Departure on selected Sundays.

## Program Touring / Guide

Private touring

## Fixed Departure

<p><b>29 Dec, 2024</b> 4 Star AUD 7,028 P P twin share AUD 9,961 P P single AVAILABLE</p>	<p><b>06 Jul, 2025</b> 4 Star AUD 7,513 P P twin share AUD 11,052 P P single AVAILABLE</p>	<p><b>13 Jul, 2025</b> 4 Star AUD 7,513 P P twin share AUD 11,052 P P single AVAILABLE</p>
<p><b>20 Jul, 2025</b> 4 Star AUD 7,513 P P twin share AUD 11,052 P P single AVAILABLE</p>	<p><b>27 Jul, 2025</b> 4 Star AUD 7,513 P P twin share AUD 11,052 P P single AVAILABLE</p>	<p><b>03 Aug, 2025</b> 4 Star AUD 7,513 P P twin share AUD 11,052 P P single AVAILABLE</p>



<p><b>10 Aug, 2025</b> 4 Star AUD 7,513 P P twin share AUD 11,052 P P single AVAILABLE</p>	<p><b>17 Aug, 2025</b> 4 Star AUD 7,513 P P twin share AUD 11,052 P P single AVAILABLE</p>	<p><b>24 Aug, 2025</b> 4 Star AUD 7,513 P P twin share AUD 11,052 P P single AVAILABLE</p>
<p><b>21 Dec, 2025</b> 4 Star AUD 7,513 P P twin share AUD 11,052 P P single AVAILABLE</p>		

