



Discover Namibia Southern Odyssey - 8 Days (#17121)

Note: Price printed on this PDF is valid until **26-05-2024** and is subject to change without notice due to Partner changes and currency fluctuations

Overview

Soak up the desert landscapes of southern Namibia as you travel from the Kalahari Desert with its ancient red sands to the gigantic 100-mile ravine of the Fish River Canyon.

Minimum 2 guests / Maximum 16 guests

Departure Day - Sunday, selected departure dates.

Trip Highlights

Windhoek-Kalahari Desert-Fish River Canyon-Lüderitz-Namib Desert-Swakopmund-Damaraland-Etoshia National Park

Detailed Itinerary



Day 01

Day 1, Sunday - Windhoek - Kalahari Desert

Departing from Windhoek, we travel into the largest sand mass on Earth, the Kalahari Desert. The Kalahari is a vast semi desert of wind-blown sand held by a sparse mantle of thorn scrub making it the largest continuous stretch of sand covering 9 African countries. Unlike other true deserts, the Kalahari does receive erratic rainfall. For many therefore “thirstland” is a more fitting description. Lacking permanent surface water, the Kalahari is a challenging place to live except for those who have adapted to not only survive but flourish here. The Bushmen refer to it as the “Soul of the World”, an emotive description for this area! With its deep red sand dunes and endless grass plains interspersed with acacia’s and shrubs, it is still home to a surprising large amount of specially adapted wildlife. Enjoy the opportunity to experience the red dunes, wildlife and plants, in this desert environment on an optional nature drive.

Day 02

Day 2, Monday - Kalahari Desert-Fish River Canyon

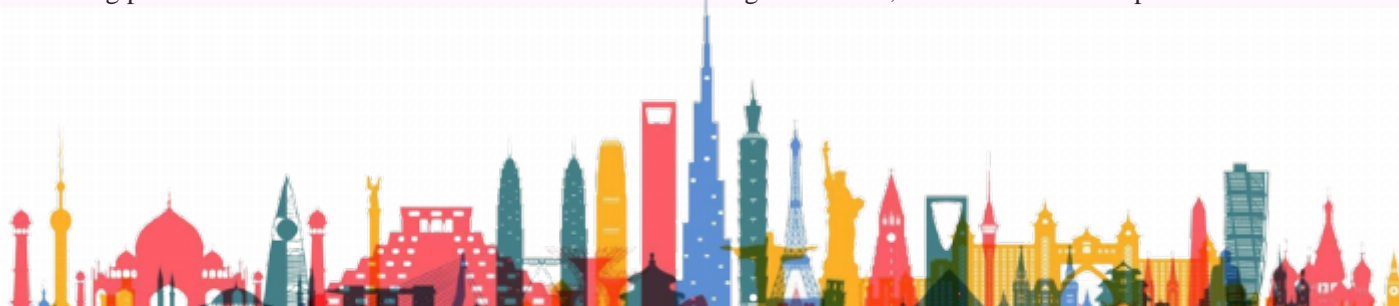
We continue south through arid and extensive rocky plains. Visiting the unique Garas quivertree forest you are welcomed by quirky man-made sculptures of scrap metal which set a contrast to this serene, timeless space with Quiver trees and aloes nestled amongst huge dolerite boulders, stacked in a mysterious way, the area is also aptly referred to as “Giant’s Playground”. We continue to our lodge, situated in close vicinity to the Fish River Canyon. Here we can explore the area on foot or on an optional guided nature drive in the later afternoon highlighting the Quiver trees, rugged landscape and impressive sweeping rock formations.

Meal: Breakfast

Day 03

Day 3, Tuesday - Fish River Canyon-Lüderitz

Our morning starts on the edge of the Fish River Canyon where we gaze into this magnificent geological phenomenon. The Fish River Canyon is located in the northern part of the Nama Karoo and is the second largest canyon on earth, featuring a gigantic ravine that measures in total about 160 km long, up to 27 km wide and in places almost 550 meters deep. The Fish River is the longest interior river found in Namibia, but its current flow is just a drop compared with the immense volume of water that poured down its length in ages past. We continue our journey past the Naute dam, where we shortly stop at the Naute Kristall Cellar and Distillery, to optionally taste some of the unique liquors (own account) or simply enjoy a delicious cup of coffee. Proceeding onwards we head towards the coastal town of Lüderitz. On the way to Lüderitz we stop at Garub, viewing point for the Wild Horses of the Namib Desert. Arriving in Lüderitz, we recommend a stop at the Diaz Café for an



optional fresh and delicious seafood snack before heading out along the “Große Bucht” towards Diaz Point. Your hosts for the evening will have you enjoying a typical Namibian homestay feeling and atmosphere.

Meal: Breakfast

Day 04

Day 4, Wednesday - Lüderitz-Namib Desert

Our morning starts with a visit to Kolmanskop ghost town. Kolmanskop is a deserted Diamond Mining Town in the Sperrgebiet National Park. Once an opulent and decadent town, a monument to the Diamond boom and built to last...until the diamonds ran out. Today Kolmanskop stands as a haunting monument to the thriving past, offering visitor's unique photo motives into a bygone era. The journey continues across vast open plains, stopping for an optional light lunch in the small town of Helmeringhausen before heading further north along with the Tiras Mountain range to our lodge in the Namib Desert. The lodge is located close to Sesriem the gateway to Sossusvlei, Dead Vlei and Sesriem Canyon, with some of the highest dunes on Earth towering over the white desert plains. The afternoon can be spent relaxing at the sparkling pool, enjoying the vast open desert plains, or taking part in optional activities offered at the lodge.

Meal: Breakfast

Day 05

Day 5, Thursday - Namib Desert

The morning demands an early start. Entering the Namib Naukluft National Park with sunrise, the first rays of sunlight paint the mountains of sand into a variety of apricot, red and orange, contrasted against a crisp blue skyline, enrapturing our senses, and providing an opportunity to capture this awesome landscape on film. You will be captivated by the surreal Deadvlei surrounded by some of the highest dunes on earth and Sossusvlei, where the dry Tsauchab River ends abruptly amongst dunes. Take the opportunity to walk up one of these majestic dunes to admire the desert landscape beneath. Thereafter we visit the Sesriem Canyon, a life sustaining natural phenomenon in the heart of the Namib Desert.

Meal: Breakfast

Day 06

Day 6, Friday - Namib Desert - Swakopmund

After breakfast we continue our journey approaching the little settlement of Solitaire on the edge of the Namib Naukluft National Park, feeling like you have arrived in the middle of nowhere. Here it is worthwhile to enjoy a cup of coffee with the



delightful apple-pie written about in so many travel books before travelling via the desolate, rolling hills of the Kuiseb Valley towards the Atlantic Ocean. Reaching the coastal harbour town of Walvis Bay, we visit the shallow lagoon, one of the most important wetland areas on the African continent and a RAMSAR World Heritage Site. Over 80% of the African flamingos feed in this lagoon and present a breath-taking picture when they appear in groups. Continuing along the scenic route between the dune belt and the Atlantic Ocean we reach Swakopmund, where the rest of the day is spent at leisure. With palm-lined streets and seaside promenades, Swakopmund is a popular holiday destination in Namibia. Its pleasant summer climate and long stretched beaches attract anglers and surfers from all over Southern Africa.

Meal: Breakfast

Day 07

Day 7, Saturday - Swakopmund

Swakopmund is often fondly referred to as the “playground of Namibia”, it has numerous activities ranging from, adventure to exploring the fascinating features of the Namib Desert and the animals and plants that occur and survive here. Embrace the relaxed pace of this idyllic coastal town whilst enjoying coffee and freshly baked pastries in one of the many café’s. Alternatively explore the rugged, sweltering desert on a day tour, or view this awesome, environment from the air on a scenic flight. Find your inner child and push adrenaline to its limits with extreme adventures such as skydiving over the desert or quad biking and sandboarding on the dunes. Take time to get the feel of this quaint town with its historic buildings, museums, shopping arcades and beach bar that has transformed into its own personality by the vibrant use of colour and the bohemian lifestyle.

Meal: Breakfast

Day 08

Day 8, Sunday - Swakopmund-Windhoek

After breakfast we travel back to Windhoek to our hotel or to the international airport for our return flight.

Meal: Breakfast

Inclusions

7 breakfasts, accommodation, bottled water on board, portorage, entrance fees and sightseeing as specified.



Exclusions

- International airfares
- Optional activities
- Other meals, drinks, tips and other personal expenses or services not specified on the program
- Personal equipment
- Travel insurance, Gratuities
- Voluntary tips for guides or drivers
- Travel and medical insurance
- Any items not mentioned as included

Note

Hotels Used OR Similar

Kalahari Desert - Intu Africa Collection or similar

Fish River Canyon - Cañon Village or similar

Lüderitz - Obelix Guesthouse or similar

Namib Desert - Elegant Desert Lodge or similar

Swakopmund - Hansa Hotel or similar

VISA REQUIREMENTS

require visas in order to travel through Namibia

Please check visa requirements, as certain nationalities may

LANGUAGE

All departures are in dual language German/English commentary except dates indicated as English as mentioned below.

Dates with English language: 03rd and 31st March' 2024, 26th May' 2024, 23rd June' 2024, 04th August' 2024, 01st and 29th September' 2024 and 13th October' 2024.

TIMINGS

Departure of the tour will be between 08:00 and 09:00 on the first day.

Same day departure flights from Windhoek should only be booked after 19:00.

Highlights: Kalahari Desert, Quiver Tree Forest, Fish River Canyon, Feral Horses of the Namib, Namib Desert, Sossusvlei, Moon landscape and Swakopmund.



Prices are subject to alteration without prior notice. Prices are also subject to adjustment in the event of changes in government imposed taxes, fuel price, airfares, hotel charges, tourism levies and the introduction of national, regional or local taxes or levies of whatever nature.

Departure from Windhoek on Sunday.

Program Touring / Guide

Escorted Experience

Fixed Departure

26 May, 2024 Package Cost AUD 3,482 P P twin share AUD 3,779 P P single AVAILABLE	09 Jun, 2024 Package Cost AUD 3,482 P P twin share AUD 3,779 P P single AVAILABLE	23 Jun, 2024 Package Cost AUD 3,482 P P twin share AUD 3,779 P P single AVAILABLE
07 Jul, 2024 Package Cost AUD 3,482 P P twin share AUD 3,779 P P single AVAILABLE	21 Jul, 2024 Package Cost AUD 3,482 P P twin share AUD 3,779 P P single AVAILABLE	28 Jul, 2024 Package Cost AUD 3,482 P P twin share AUD 3,779 P P single AVAILABLE
04 Aug, 2024 Package Cost AUD 3,482 P P twin share AUD 3,779 P P single AVAILABLE	11 Aug, 2024 Package Cost AUD 3,482 P P twin share AUD 3,779 P P single AVAILABLE	18 Aug, 2024 Package Cost AUD 3,482 P P twin share AUD 3,779 P P single AVAILABLE
25 Aug, 2024 Package Cost AUD 3,482 P P twin share AUD 3,779 P P single AVAILABLE	01 Sep, 2024 Package Cost AUD 3,482 P P twin share AUD 3,779 P P single AVAILABLE	08 Sep, 2024 Package Cost AUD 3,482 P P twin share AUD 3,779 P P single AVAILABLE



<p>15 Sep, 2024</p> <p>Package Cost</p> <p>AUD 3,482 P P twin share</p> <p>AUD 3,779 P P single</p> <p>AVAILABLE</p>	<p>22 Sep, 2024</p> <p>Package Cost</p> <p>AUD 3,482 P P twin share</p> <p>AUD 3,779 P P single</p> <p>AVAILABLE</p>	<p>29 Sep, 2024</p> <p>Package Cost</p> <p>AUD 3,482 P P twin share</p> <p>AUD 3,779 P P single</p> <p>AVAILABLE</p>
<p>06 Oct, 2024</p> <p>Package Cost</p> <p>AUD 3,482 P P twin share</p> <p>AUD 3,779 P P single</p> <p>AVAILABLE</p>	<p>13 Oct, 2024</p> <p>Package Cost</p> <p>AUD 3,482 P P twin share</p> <p>AUD 3,779 P P single</p> <p>AVAILABLE</p>	<p>20 Oct, 2024</p> <p>Package Cost</p> <p>AUD 3,482 P P twin share</p> <p>AUD 3,779 P P single</p> <p>AVAILABLE</p>

