



Cruising Galapagos (#19402)

Note: Price printed on this PDF is valid until **30-11-2024** and is subject to change without notice due to Partner changes and currency fluctuations

Trip Highlights

Galapagos - Santa Cruz - San Cristobal Island - Cerro Brujo - spanola Island - Suarez Point - Cormorant Point - Post Office Bay - Turles Trail - Baltra

Detailed Itinerary

Day 01

DAY 01 : (Monday) Galapagos - Santa Cruz

AM: FLIGHT TO GALAPAGOS - This day you will fly to the Galapagos Island. Due to the Galapagos Government, a fee of AUD 47 must be paid for the migration control card.

Once in Santa Cruz, passengers must go through an inspection point at the airport to make sure that no foreign plants or animals are being introduced to the archipelago. Also, this inspection point is where passengers have to pay for the entrance to the Galapagos National Park under the following parameters: Passengers Foreigners AUD 234 and Children AUD 117 (under 12 years old).



Later on, your guide will pick you, and will carry your luggage to the bus. Passengers will arrive to the Catamaran Seaman Journey on a motorized boat called panga.

PM: SAN CRISTOBAL, INTERPRETATION CENTER - This is an interpretation centre with exuberant gardens and stunning ocean views. Visitors at the interpretation centre can learn a lot from the geological and human history of the islands, conservation facts and natural history. This is the oldest museum of Natural History in the Galapagos Islands which attempts to preserve the archipelago. It is indeed inspiring and motivating to watch and learn all of their research and attempts.

Day 02

DAY 02: (Tuesday) San Cristobal Island - Cerro Brujo

AM: SAN CRISTOBAL ISLAND, GALAPAGUERA - A short visit will take place at the Galapaguera, a good place to observe Galapagos tortoises in its natural habitat. San Cristobal Island has endemic species such as: the Mockingbird *Nesomimus melanotis*, lava lizard (*Microlophus bivittatus*), Chatham Leaf-toed Gecko (*Phyllodactylus leei*) and the tortoises. All of these species can be observed in this place, the beach is really big and it works as a nesting zone for marine tortoises. Between January and May, it is common to find the footprints of the female tortoises who have climbed to the sand dunes to deposit their eggs! This truly is a worthy experience to be a part of.

PM: CERRO BRUJO - Cerro Brujo is a beautiful white coral beach where you can swim and watch birds and sea lions, plus you can snorkel. This is the first coast where Charles Darwin walked on, in 1835. In this marvellous lava landscape, you can watch seabirds like blue-footed boobies, Nazca boobies, herons, frigate birds and shore birds. The protected bay is well known for its young tortoises which like to swim around. The pools with salty water behind the sand dunes were used by the fishermen as a salt mine in order to preserve food for the local population. Among the fauna you can observe the Chatham Mockingbird and the San Cristobal Lava Lizards, both species are endemic to the island and unique to the area. Furthermore, you will see the Galapagos turtles and with luck, the little bird known as the Pájaro Brujo in Spanish, an endemic species in San Cristobal Island. The vegetation covers all the route, where you can find species like the candelabrum cactus and carob trees.

Located on the north coast of Isla San Cristobal it is a peaceful place with white sand and crystal water, a perfect combination for an incredible stay.

Day 03

DAY 03: (Wednesday) Espanola Island - Suarez Point



AM: ESPAÑOLA ISLAND, GARDNER BAY - Located on the north-eastern coast of Hood, Gardner Bay offers an excellent beach to relax, swim and even kayak, plus the opportunity to observe sea lions (*Zalophus wollebaki*), here we can also observe sharks in the crystal clear ocean waters. At this place you can see three species of Darwin finches: A subspecies of the large-billed cactus finch (*Geospiza fuliginosa*), which is similar to the large-billed terrestrial finch; the small-beaked ground finch (*Geospiza fuliginosa* and; the singing finch (*Certhidea Olivacea*) which is another endemic subspecies. Both resident and migratory birds are observed.

PM: SUAREZ POINT - This area is great for spotting blue-footed boobies, albatrosses and Nazca boobies. A beautiful site on the oceanfront, the large waved albatrosses use the cliff as a launching pad. The famous attraction is the magnificent blowhole, spurring water high into the air at least from 50 to 75 meters high. This site presents wonderful photograph opportunities.

Day 04

DAY 04: (Thursday) Cormorant Point - Post Office Bay

AM: CORMORANT POINT, CHAMPION ISLET - This site offers probably the best flamingo lagoon in the Galapagos; it is also one of the largest in the islands. It's situated between two tuff lava cones that give the area a special atmosphere.

There are various species of shorebirds to observe besides flamingos; the most frequent are common stilts, white-checked pintail ducks, and other migratory birds. It is very interesting to see the two distinct beaches: "The Green Beach" (due to its high percentage of olivine crystals in the sand) and the "Flour Sand Beach" which is made up of coral. After the interesting walk, the group is taken to Champion Islet, a great place to enjoy snorkelling and underwater wildlife. Some of the animals that can be seen are sea turtles, sea lions, and multiple fish thanks to the nearby coral reef.

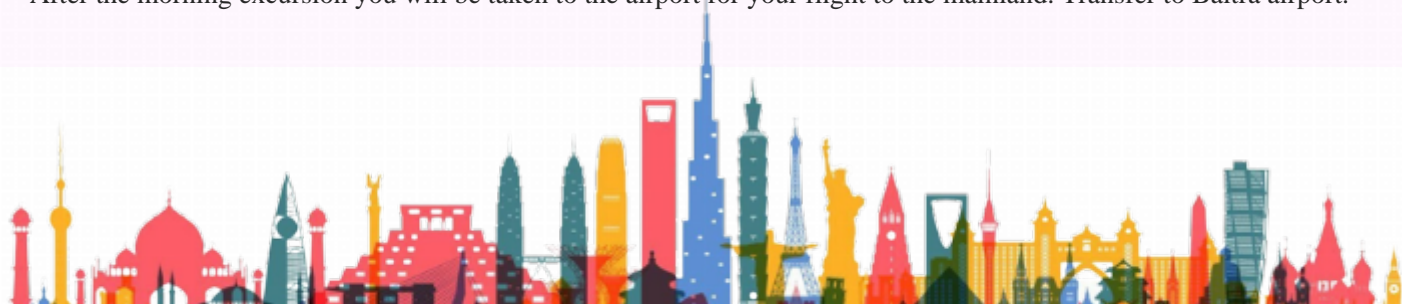
PM: POST OFFICE BAY - Historically, this site is the location of a wooden barrel that was placed in the 18th century by the crew of a whaling ship. It has been used since this time by marines and tourists as a post office. The idea is to carry letters or postcards to their destination by hand. Besides, this site was the landing area for some of the first colonists. This day's afternoon is thought to be a relaxing time for visitors to enjoy the beach and the beauty of Galapagos.

Day 05

DAY 05: (Friday) Turtles Trail - Baltra

AM: TURTLES TRAIL - Although the great majority of Galapagos visitors come here to observe and appreciate natural wonders, it is also interesting to learn how the protection and conservation of the islands are carried out. This path offers the possibility to learn aspects and feel synchronized with nature.

After the morning excursion you will be taken to the airport for your flight to the mainland. Transfer to Baltra airport.



Inclusions

Airport assistance (Quito or Guayaquil, if flights are booked through GGTS)

Transfers in Galapagos.

Accommodation on board in double cabin.

All meals during the cruise.

Naturalist Bilingual Guide level III.

All visits and excursions according to the itinerary

Snorkel Gear (mask, tube and fins).

Kayaks.

Unlimited purified water, coffee and tea.

Exclusions

International / Domestic Airfare

Round trip flight to/from Galapagos

Galapagos National Park Entrance fee AUD 234,00 p/p

Galápagos Ingala card AUD 47,00 p/p

Negative PCR test for Covid-19 (taken 96 hours before the departure)

Wet suit rental

Local taxes

Meals, drinks, tips and other personal expenses or services not specified in the program

Travel insurance

Gratuities

Voluntary tips for drivers

Travel and medical insurance.

Note

Rates do not apply for Christmas and New Year departures, please ask your agent for high season rates.

10% discount for children under 12 years (Applies for 1 child for every 2 adults).

Rates are subject to change in case of additional taxes, fuel increases or many other unforeseen circumstance.

Charter - Maximum 16 pax. (Available on request).



Monday departure.

Fixed Departure

02 Dec, 2024

TWIN OCEAN VIEW
(MAIN DECK)

AUD 7,701 P P twin share

AUD 13,092 P P single

AVAILABLE

MATRIMONIAL SUITE
(UPPER DECK)

AUD 8,234 P P twin share

AUD 13,998 P P single

AVAILABLE

16 Dec, 2024

TWIN OCEAN VIEW (MAIN DECK)

AUD 7,701 P P twin share

AUD 13,092 P P single

AVAILABLE

MATRIMONIAL SUITE (UPPER DECK)

AUD 8,234 P P twin share

AUD 13,998 P P single

AVAILABLE

13 Jan, 2025

TWIN OCEAN VIEW
(MAIN DECK)

AUD 9,177 P P twin share

AUD 15,600 P P single

AVAILABLE

MATRIMONIAL SUITE
(UPPER DECK)

AUD 9,862 P P twin share

AUD 16,766 P P single

AVAILABLE

27 Jan, 2025

TWIN OCEAN VIEW
(MAIN DECK)

AUD 9,177 P P twin share

AUD 15,600 P P single

AVAILABLE

MATRIMONIAL SUITE
(UPPER DECK)

AUD 9,862 P P twin share

AUD 16,766 P P single

AVAILABLE

10 Feb, 2025

TWIN OCEAN VIEW (MAIN DECK)

AUD 9,177 P P twin share

AUD 15,600 P P single

AVAILABLE

MATRIMONIAL SUITE (UPPER DECK)

AUD 9,862 P P twin share

AUD 16,766 P P single

AVAILABLE

24 Feb, 2025

TWIN OCEAN VIEW
(MAIN DECK)

AUD 9,177 P P twin share

AUD 15,600 P P single

AVAILABLE

MATRIMONIAL SUITE
(UPPER DECK)

AUD 9,862 P P twin share

AUD 16,766 P P single

AVAILABLE



<p>10 Mar, 2025 TWIN OCEAN VIEW (MAIN DECK) AUD 9,177 P P twin share AUD 15,600 P P single AVAILABLE</p> <p>MATRIMONIAL SUITE (UPPER DECK) AUD 9,862 P P twin share AUD 16,766 P P single AVAILABLE</p>	<p>24 Mar, 2025 TWIN OCEAN VIEW (MAIN DECK) AUD 9,177 P P twin share AUD 15,600 P P single AVAILABLE</p> <p>MATRIMONIAL SUITE (UPPER DECK) AUD 9,862 P P twin share AUD 16,766 P P single AVAILABLE</p>	<p>07 Apr, 2025 TWIN OCEAN VIEW (MAIN DECK) AUD 9,177 P P twin share AUD 15,600 P P single AVAILABLE</p> <p>MATRIMONIAL SUITE (UPPER DECK) AUD 9,862 P P twin share AUD 16,766 P P single AVAILABLE</p>
<p>21 Apr, 2025 TWIN OCEAN VIEW (MAIN DECK) AUD 9,177 P P twin share AUD 15,600 P P single AVAILABLE</p> <p>MATRIMONIAL SUITE (UPPER DECK) AUD 9,862 P P twin share AUD 16,766 P P single AVAILABLE</p>	<p>05 May, 2025 TWIN OCEAN VIEW (MAIN DECK) AUD 9,177 P P twin share AUD 15,600 P P single AVAILABLE</p> <p>MATRIMONIAL SUITE (UPPER DECK) AUD 9,862 P P twin share AUD 16,766 P P single AVAILABLE</p>	<p>19 May, 2025 TWIN OCEAN VIEW (MAIN DECK) AUD 9,177 P P twin share AUD 15,600 P P single AVAILABLE</p> <p>MATRIMONIAL SUITE (UPPER DECK) AUD 9,862 P P twin share AUD 16,766 P P single AVAILABLE</p>
<p>02 Jun, 2025 TWIN OCEAN VIEW (MAIN DECK) AUD 9,177 P P twin share AUD 15,600 P P single AVAILABLE</p> <p>MATRIMONIAL SUITE (UPPER DECK) AUD 9,862 P P twin share AUD 16,766 P P single AVAILABLE</p>	<p>16 Jun, 2025 TWIN OCEAN VIEW (MAIN DECK) AUD 9,177 P P twin share AUD 15,600 P P single AVAILABLE</p> <p>MATRIMONIAL SUITE (UPPER DECK) AUD 9,862 P P twin share AUD 16,766 P P single AVAILABLE</p>	<p>30 Jun, 2025 TWIN OCEAN VIEW (MAIN DECK) AUD 9,177 P P twin share AUD 15,600 P P single AVAILABLE</p> <p>MATRIMONIAL SUITE (UPPER DECK) AUD 9,862 P P twin share AUD 16,766 P P single AVAILABLE</p>



<p>14 Jul, 2025 TWIN OCEAN VIEW (MAIN DECK) AUD 9,177 P P twin share AUD 15,600 P P single AVAILABLE</p> <p>MATRIMONIAL SUITE (UPPER DECK) AUD 9,862 P P twin share AUD 16,766 P P single AVAILABLE</p>	<p>28 Jul, 2025 TWIN OCEAN VIEW (MAIN DECK) AUD 9,177 P P twin share AUD 15,600 P P single AVAILABLE</p> <p>MATRIMONIAL SUITE (UPPER DECK) AUD 9,862 P P twin share AUD 16,766 P P single AVAILABLE</p>	<p>11 Aug, 2025 TWIN OCEAN VIEW (MAIN DECK) AUD 9,177 P P twin share AUD 15,600 P P single AVAILABLE</p> <p>MATRIMONIAL SUITE (UPPER DECK) AUD 9,862 P P twin share AUD 16,766 P P single AVAILABLE</p>
<p>25 Aug, 2025 TWIN OCEAN VIEW (MAIN DECK) AUD 9,177 P P twin share AUD 15,600 P P single AVAILABLE</p> <p>MATRIMONIAL SUITE (UPPER DECK) AUD 9,862 P P twin share AUD 16,766 P P single AVAILABLE</p>	<p>08 Sep, 2025 TWIN OCEAN VIEW (MAIN DECK) AUD 9,177 P P twin share AUD 15,600 P P single AVAILABLE</p> <p>MATRIMONIAL SUITE (UPPER DECK) AUD 9,862 P P twin share AUD 16,766 P P single AVAILABLE</p>	<p>22 Sep, 2025 TWIN OCEAN VIEW (MAIN DECK) AUD 9,177 P P twin share AUD 15,600 P P single AVAILABLE</p> <p>MATRIMONIAL SUITE (UPPER DECK) AUD 9,862 P P twin share AUD 16,766 P P single AVAILABLE</p>
<p>06 Oct, 2025 TWIN OCEAN VIEW (MAIN DECK) AUD 9,177 P P twin share AUD 15,600 P P single AVAILABLE</p> <p>MATRIMONIAL SUITE (UPPER DECK) AUD 9,862 P P twin share AUD 16,766 P P single AVAILABLE</p>	<p>20 Oct, 2025 TWIN OCEAN VIEW (MAIN DECK) AUD 9,177 P P twin share AUD 15,600 P P single AVAILABLE</p> <p>MATRIMONIAL SUITE (UPPER DECK) AUD 9,862 P P twin share AUD 16,766 P P single AVAILABLE</p>	<p>03 Nov, 2025 TWIN OCEAN VIEW (MAIN DECK) AUD 9,177 P P twin share AUD 15,600 P P single AVAILABLE</p> <p>MATRIMONIAL SUITE (UPPER DECK) AUD 9,862 P P twin share AUD 16,766 P P single AVAILABLE</p>



17 Nov, 2025

TWIN OCEAN VIEW
(MAIN DECK)

AUD 9,177 P P twin share

AUD 15,600 P P single

AVAILABLE

MATRIMONIAL SUITE
(UPPER DECK)

AUD 9,862 P P twin share

AUD 16,766 P P single

AVAILABLE

01 Dec, 2025

TWIN OCEAN VIEW (MAIN DECK)

AUD 9,177 P P twin share

AUD 15,600 P P single

AVAILABLE

MATRIMONIAL SUITE (UPPER DECK)

AUD 9,862 P P twin share

AUD 16,766 P P single

AVAILABLE

15 Dec, 2025

TWIN OCEAN VIEW
(MAIN DECK)

AUD 9,177 P P twin share

AUD 15,600 P P single

AVAILABLE

MATRIMONIAL SUITE
(UPPER DECK)

AUD 9,862 P P twin share

AUD 16,766 P P single

AVAILABLE

29 Dec, 2025

TWIN OCEAN VIEW
(MAIN DECK)

AUD 9,177 P P twin share

AUD 15,600 P P single

AVAILABLE

MATRIMONIAL SUITE
(UPPER DECK)

AUD 9,862 P P twin share

AUD 16,766 P P single

AVAILABLE

