



Classic Namibia - 13 Days (#17111)

Note: Price printed on this PDF is valid until **11-07-2025** and is subject to change without notice due to Partner changes and currency fluctuations

Overview

This guided adventure takes in all Namibia's highlights from the red deserts of the south to the Atlantic shore, from the beauty of Damaraland to the magnificent wildlife in Etosha National Park.

Minimum 2 guests / Maximum 16 guests.

Departure Day - Tuesday, selected departure dates.

ROUTING: WINDHOEK - WINDHOEK

Trip Highlights

Windhoek-Kalahari Desert-Fish River Canyon-Lüderitz-Namib Desert-Swakopmund-Damaraland-Etosha National Park

Detailed Itinerary



Day 01

Day 1, Tuesday - Windhoek - Kalahari Desert

Leaving Windhoek, we travel into the largest sand mass on Earth, the Kalahari Desert. The Kalahari is a vast semi desert of wind-blown sand held by a sparse mantle of thorn scrub making it the largest continuous stretch of sand covering 9 African countries. Unlike other true deserts, the Kalahari does receive erratic rainfall. For many therefor “thirstland” is a more fitting description. Lacking permanent surface water, the Kalahari is a challenging place to live except for those who have adapted to not only survive but flourish here. The Bushmen refer to it as the “Soul of the World”, an emotive description for this area! With its deep red sand dunes and endless grass plains interspersed with acacia’s and shrubs, it is still home to a surprising large amount of specially adapted wildlife. Enjoy the opportunity to experience the red dunes, wildlife and plants, in this desert environment on an optional nature drive.

Day 02

Day 2, Wednesday - Kalahari Desert-Fish River Canyon

We continue south through arid and extensive rocky plains. Visiting the unique Garas quiver tree forest you are welcomed by quirky man-made sculptures of scrap metal which set a contrast to this serene, timeless space with Quiver trees and aloes nestled amongst huge dolerite boulders, stacked in a mysterious way, the area is also aptly referred to as “Giant’s Playground”. We continue to our lodge, situated in close vicinity to the Fish River Canyon. Here we can explore the area on foot or on an optional guided nature drive in the later afternoon highlighting the Quiver trees, rugged landscape and impressive sweeping rock formations.

Meal: Breakfast

Day 03

Day 3, Thursday - Fish River Canyon - Lüderitz

Our morning starts on the edge of the Fish River Canyon where we gaze into this magnificent geological phenomenon. The Fish River Canyon is located in the northern part of the Nama Karoo and is the second largest canyon on earth, featuring a gigantic ravine that measures in total about 160 km long, up to 27 km wide and in places almost 550 meters deep. The Fish River is the longest interior river found in Namibia, but its current flow is just a drop compared with the immense volume of water that poured down its length in ages past. We continue our journey past the Naute dam, where we shortly stop at the Naute Kristall Cellar and Distillery, to optionally taste some of the unique liquors (own account) or simply enjoy a delicious cup of coffee. Proceeding onwards we head towards the coastal town of Lüderitz. On the way to Lüderitz we stop at Garub, viewing point for the Wild Horses of the Namib Desert. Arriving in Lüderitz, we recommend a stop at the Diaz Café for an



optional fresh and delicious seafood snack before heading out along the “Große Bucht” towards Diaz Point. Your hosts for the evening will have you enjoying a typical Namibian homestay feeling and atmosphere.

Meal: Breakfast

Day 04

Day 4, Friday - Lüderitz-Namib Desert

Our morning starts with a visit to Kolmanskop ghost town. Kolmanskop is a deserted Diamond Mining Town in the Sperrgebiet National Park. Once an opulent and decadent town, a monument to the Diamond boom and built to last...until the diamonds ran out. Today Kolmanskop stands as a haunting monument to the thriving past, offering visitor's unique photo motives into a bygone era. The journey continues across vast open plains, stopping for an optional light lunch in the small town of Helmeringhausen before heading further north along with the Tiras Mountain range to our lodge in the Namib Desert. The lodge is located close to Sesriem the gateway to Sossusvlei, Dead Vlei and Sesriem Canyon, with some of the highest dunes on Earth towering over the white desert plains. The afternoon can be spent relaxing at the sparkling pool, enjoying the vast open desert plains, or taking part in optional activities offered at the lodge.

Meal: Breakfast

Day 05

Day 5, Saturday - Namib Desert

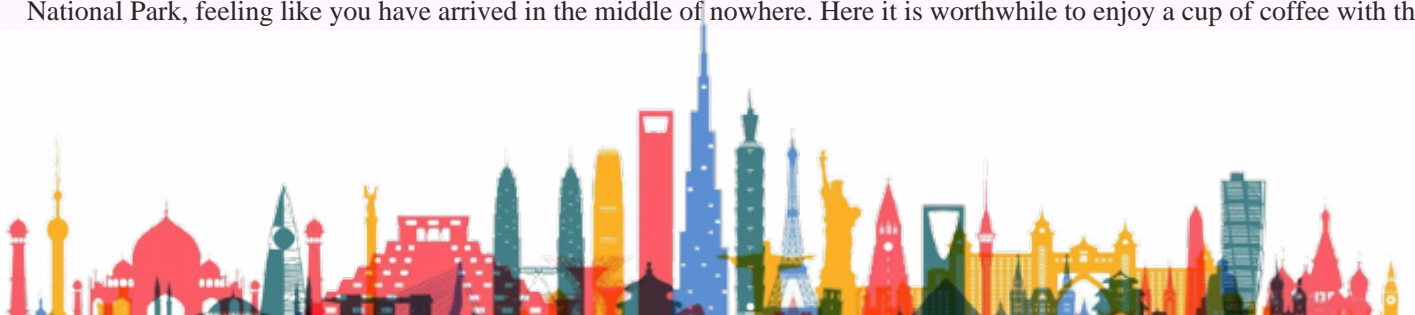
The morning demands an early start. Entering the Namib Naukluft National Park with sunrise, the first rays of sunlight paint the mountains of sand into a variety of apricot, red and orange, contrasted against a crisp blue skyline, enrapturing our senses, and providing an opportunity to capture this awesome landscape on film. You will be captivated by the surreal Deadvlei surrounded by some of the highest dunes on earth and Sossusvlei, where the dry Tsauchab River ends abruptly amongst dunes. Take the opportunity to walk up one of these majestic dunes to admire the desert landscape beneath. Thereafter we visit the Sesriem Canyon, a life sustaining natural phenomenon in the heart of the Namib Desert.

Meal: Breakfast

Day 06

Day 6, Sunday - Namib Desert - Swakopmund

After breakfast we continue our journey approaching the little settlement of Solitaire on the edge of the Namib Naukluft National Park, feeling like you have arrived in the middle of nowhere. Here it is worthwhile to enjoy a cup of coffee with the



delightful apple-pie written about in so many travel books before travelling via the desolate, rolling hills of the Kuiseb Valley towards the Atlantic Ocean. Reaching the coastal harbour town of Walvis Bay, we visit the shallow lagoon, one of the most important wetland areas on the African continent and a RAMSAR World Heritage Site. Over 80% of the African flamingos feed in this lagoon and present a breath-taking picture when they appear in groups. Continuing along the scenic route between the dune belt and the Atlantic Ocean we reach Swakopmund, where the rest of the day is spent at leisure. With palm-lined streets and seaside promenades, Swakopmund is a popular holiday destination in Namibia. Its pleasant summer climate and long stretched beaches attract anglers and surfers from all over Southern Africa.

Meal: Breakfast

Day 07

Day 7, Monday - Swakopmund

Swakopmund is often fondly referred to as the “playground of Namibia”, it has numerous activities ranging from, adventure to exploring the fascinating features of the Namib Desert and the animals and plants that occur and survive here. Embrace the relaxed pace of this idyllic coastal town whilst enjoying coffee and freshly baked pastries in one of the many café’s. Alternatively explore the rugged, sweltering desert on a day tour, or view this awesome, environment from the air on a scenic flight. Find your inner child and push adrenaline to its limits with extreme adventures such as skydiving over the desert or quad biking and sand boarding on the dunes. Take time to get the feel of this quaint town with its historic buildings, museums, shopping arcades and beach bar that has transformed into its own personality by the vibrant use of colour and the bohemian lifestyle.

Meal: Breakfast

Day 08

Day 8, Tuesday - Swakopmund-Damaraland

Leaving the foggy coast behind this morning, we make our way towards Damaraland. The journey takes us through the mining village of Uis and past the Brandberg, Namibia's highest mountain, just shy of 2 600m. We then continue further into Damaraland, one of the least populated and most geologically diverse areas in Africa. This harsh, rocky environment is home to the elusive desert elephant, the black rhino and free-roaming antelope species. Arrival at the lodge will be in the afternoon, with the remainder of the day at leisure to soak up the atmosphere of the lodge.

Meal: Breakfast



Day 09

Day 9, Wednesday - Damaraland

Enjoy an early morning scenic nature drive through the wilderness area of the Otjimboyo Concession as we make our way towards the Brandberg, Namibia's highest mountain. This is the best time to capture the perfect light of sunrise and catch the last mist engulfing the mountain. We then continue down into the dry Ugab riverbed, which we follow back towards the camp. Stopping under one of the majestic camelthorn trees we enjoy a light picnic lunch. On our drive along the meandering river we might encounter the elusive desert elephant that roam the dry riverbeds of the Damaraland, feeding on the nutritious pods of the trees lining the riverbanks. Arriving back at the camp we have enough time left to enjoy the scenery or follow one of the walking trails.

Meal: Breakfast

Day 10

Day 10, Thursday - Damaraland-Etosha National Park

During the cooler hours of the morning we start our adventure filled day in the company of a local Damara guide, who takes us to Twyfelfontein, a UNESCO heritage site where Bushman communities engraved and painted over 2.500 pictures some 6.000 years ago! After a visit to the nearby Living Museum of the Damara, we proceed to the Petrified Forest - a geological phenomenon depicting the creation and metamorphosis of wood into stone amongst some of the oldest landmasses on Earth. Here we also see the Welwitschia mirabilis plant – the oldest living desert plant on Earth. Our onward journey takes us to the wildlife heaven of Namibia - the Etosha National Park. We check into our lodge located on the border of the Etosha National Park and can unwind after the adventure filled day alongside the pool.

Meal: Breakfast

Day 11

Day 11, Friday - Etosha National Park

The day is devoted purely to the abundant wildlife found in the Etosha National Park, which surrounds a parched salt desert known as the Etosha Pan. The park is home to 4 of the Big Five - elephant, lion, leopard and rhino. The Park was proclaimed as Namibia's first conservation area in 1907 by the then Governor, von Lindequist. Despite the size of the Etosha National Park, only the southern edge of the pan is accessible to visitors. Game viewing in the park is largely focussed around the waterholes, some of which are spring fed and some supplied from a borehole, ideal places to sit and watch over 114 different game species, or for an avid birder, in excess of 340 bird species. Popular game species such as giraffe, blue wildebeest, plains and mountain zebra, hyena, lion, leopard, antelopes such as kudu, oryx, eland, as well as some of the endangered



species such as Black rhino, cheetah and the black-faced impala are all found here. An extensive network of roads link the over 30 water holes allowing visitors the opportunity of an extensive game viewing safari over the stretch of the park as each different area will provide different encounters.

Meal: Breakfast

Day 12

Day 12, Saturday - Etosha National Park

Today your guide again takes you on a game drive in the Etosha National Park. You may encounter animal species we have not seen the previous day and look forward to any new surprises at the different waterholes visited. The Etosha Pan dominates the park. This salt pan desert, which is nearly completely enclosed by the park and is lined by numerous watering holes, is roughly 130 km long and as wide as 50 km in places. During Etosha's notorious dry spells the pan is a deathly place, lying parched and cracked under the molten African sun. It is claimed that game viewing is best during the dry spells as animals will then congregate closer to water. But even in the rainy season the park remains an abundant wildlife haven. You then have the pleasure of experiencing the rebirth of life as the young foals, cubs and chicks are seen frolicking with their parents and the sprouting new green shrubs and grasses create a pleasing green oasis. In the afternoon we travel back to our lodge, where we enjoy the rest of the evening at leisure.

Meal: Breakfast

Day 13

Day 13, Sunday - Etosha National Park-Windhoek

After breakfast, we travel back through the centre of the country exposing bush land savannah to the capital in the centre of the country. Time permitting, en-route we may stop at the famous wood carvers market in Okahandja or the craft market in the main street in Windhoek to pick up the last few souvenirs. Windhoek is a cosmopolitan melting pot of European architecture with African culture, with a variety of excellent restaurants to choose from. You will be dropped off at your accommodation of choice, or transferred to the airport for your outward flight.

Meal: Breakfast

Inclusions

12 breakfasts & 1 picnic lunch, accommodation, bottled water on board, transport, entrance fees and sightseeing as specified.



Exclusions

- International /Domestic airfares.
- Optional activities.
- Other meals, drinks, tips and other personal expenses or services not specified on the program.
- Travel insurance, Gratuities.
- Voluntary tips for guides or drivers.
- Travel and medical insurance.
- Any items not mentioned as included.

Note

Accommodation used:

Intu Africa Collection or similar x 1 night

Cañon Village or similar x 1 night

Nest Hotel or similar x 1 night

Elegant Desert Lodge or similar x 2 nights

Hansa Hotel or similar x 2 nights

Ondjamba Hills or similar x 2 nights

Etosha Safari Camp or similar x 2 nights

La Rochelle Lodge or similar x 1 night

VISA REQUIREMENTS

Please check visa requirements, as certain nationalities may require visas in order to travel through Namibia.

LANGUAGE

All departures are in dual language German/English commentary except dates indicated as English.

Highlights: Fish River Canyon, Namib Naukluft Park, Twyfelfontein, Petrified Forest, Living Museum of the Damara, Etosha National Park.

TIMINGS

Departure of the tour will be between 08:00 and 09:00 on the first day.

Same day departure flights from Windhoek should only be booked after 19:00.



Dates with English language: 04th Mar'2025, 01st April'2025, 27th May'2025, 24th June'2025, 05th Aug'2025, 30th Sep'2025 and 14th Oct'2025.

Prices are subject to alteration without prior notice. Prices are also subject to adjustment in the event of changes in government imposed taxes, fuel price, airfares, hotel charges, tourism levies and the introduction of national, regional or local taxes or levies of whatever nature.

Departure from Windhoek on Tuesday.

Program Touring / Guide

Escorted Experience

Fixed Departure

08 Jul, 2025 Package Cost AUD 7,236 P P twin share AUD 8,054 P P single AVAILABLE	15 Jul, 2025 Package Cost AUD 7,236 P P twin share AUD 8,054 P P single AVAILABLE	22 Jul, 2025 Package Cost AUD 7,236 P P twin share AUD 8,054 P P single AVAILABLE
29 Jul, 2025 Package Cost AUD 7,236 P P twin share AUD 8,054 P P single AVAILABLE	05 Aug, 2025 Package Cost AUD 7,236 P P twin share AUD 8,054 P P single AVAILABLE	12 Aug, 2025 Package Cost AUD 7,236 P P twin share AUD 8,054 P P single AVAILABLE
19 Aug, 2025 Package Cost AUD 7,236 P P twin share AUD 8,054 P P single AVAILABLE	26 Aug, 2025 Package Cost AUD 7,236 P P twin share AUD 8,054 P P single AVAILABLE	09 Sep, 2025 Package Cost AUD 7,236 P P twin share AUD 8,054 P P single AVAILABLE



<p>16 Sep, 2025 Package Cost AUD 7,236 P P twin share AUD 8,054 P P single AVAILABLE</p>	<p>23 Sep, 2025 Package Cost AUD 7,236 P P twin share AUD 8,054 P P single AVAILABLE</p>	<p>30 Sep, 2025 Package Cost AUD 7,236 P P twin share AUD 8,054 P P single AVAILABLE</p>
<p>07 Oct, 2025 Package Cost AUD 7,236 P P twin share AUD 8,054 P P single AVAILABLE</p>	<p>14 Oct, 2025 Package Cost AUD 7,236 P P twin share AUD 8,054 P P single AVAILABLE</p>	<p>21 Oct, 2025 Package Cost AUD 7,236 P P twin share AUD 8,054 P P single AVAILABLE</p>
<p>28 Oct, 2025 Package Cost AUD 7,236 P P twin share AUD 8,054 P P single AVAILABLE</p>		

